

Yakima Air Terminal / McAllister Field



Master Plan Update

Public Information Meeting #1

February 22, 2012

Please sign in



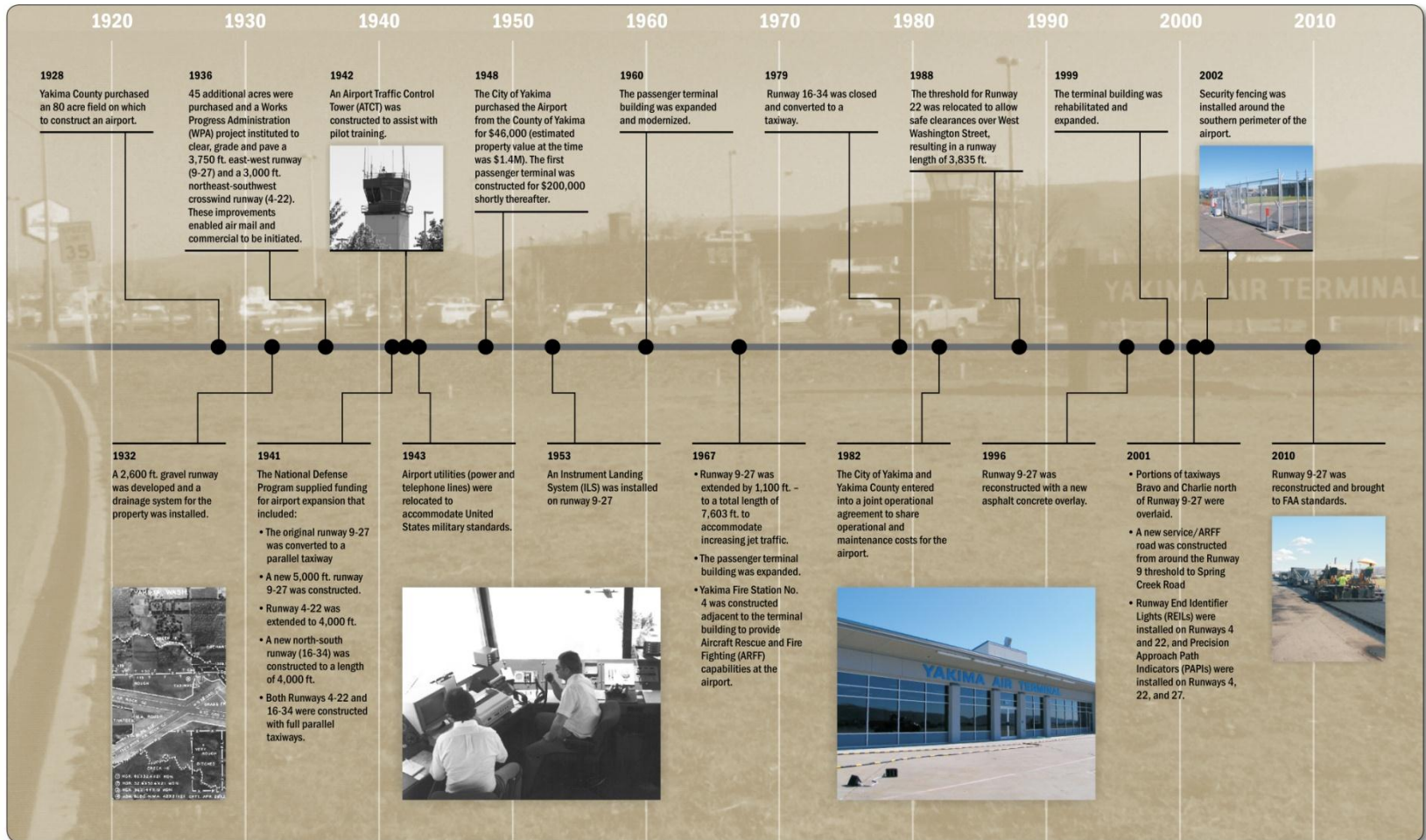
Did You Know?



- Approximately 60,000 passengers depart from Yakima Air Terminal (YKM) each year.
- An average of 49,000 aircraft operations occur each year.
- YKM is used by commercial airlines, air cargo carriers, corporations, business aviation and private pilots.
- Businesses located at YKM employ local workers.
- YKM is working with the surrounding cities to assure continued neighborhood compatibility and service levels.



Airport Development Timeline



What is an Airport Master Plan?



- A comprehensive study of an airport that describes the short-, medium-, and long-term development projects needed to meet future aviation demand.
- A guide for the physical growth of the airport coordinated with the future demand for services, available funding and environmental considerations.
- A proposed schedule for development projects and a plan for funding.
- An opportunity for the Board to create a vision for the future.
- Required by the Federal Aviation Administration (FAA).



Why are we updating the master plan for YKM?



- The existing/current master plan is being updated to outline a long-range, orderly direction for airport development which will yield a safe, efficient, economical and environmentally acceptable air transportation facility.
- The existing/current master plan is 8 years old. The business and urban development environment around the airport is constantly changing requiring the Airport Board to periodically reexamine the airport's role in the community.
- The updated master plan will provide a phased outline for development and give the Airport Board advance notice of pending needs to aid in future scheduling and budgeting.



What are the key issues for the master plan?

- The potential for a runway extension.
- Revisions to the Airport Safety Overlay Zone.
- Potential development of a new turf runway for general aviation use.
- Planning for a new or improved passenger terminal complex.



Planning Objectives



Areas where the airport needs improvement:

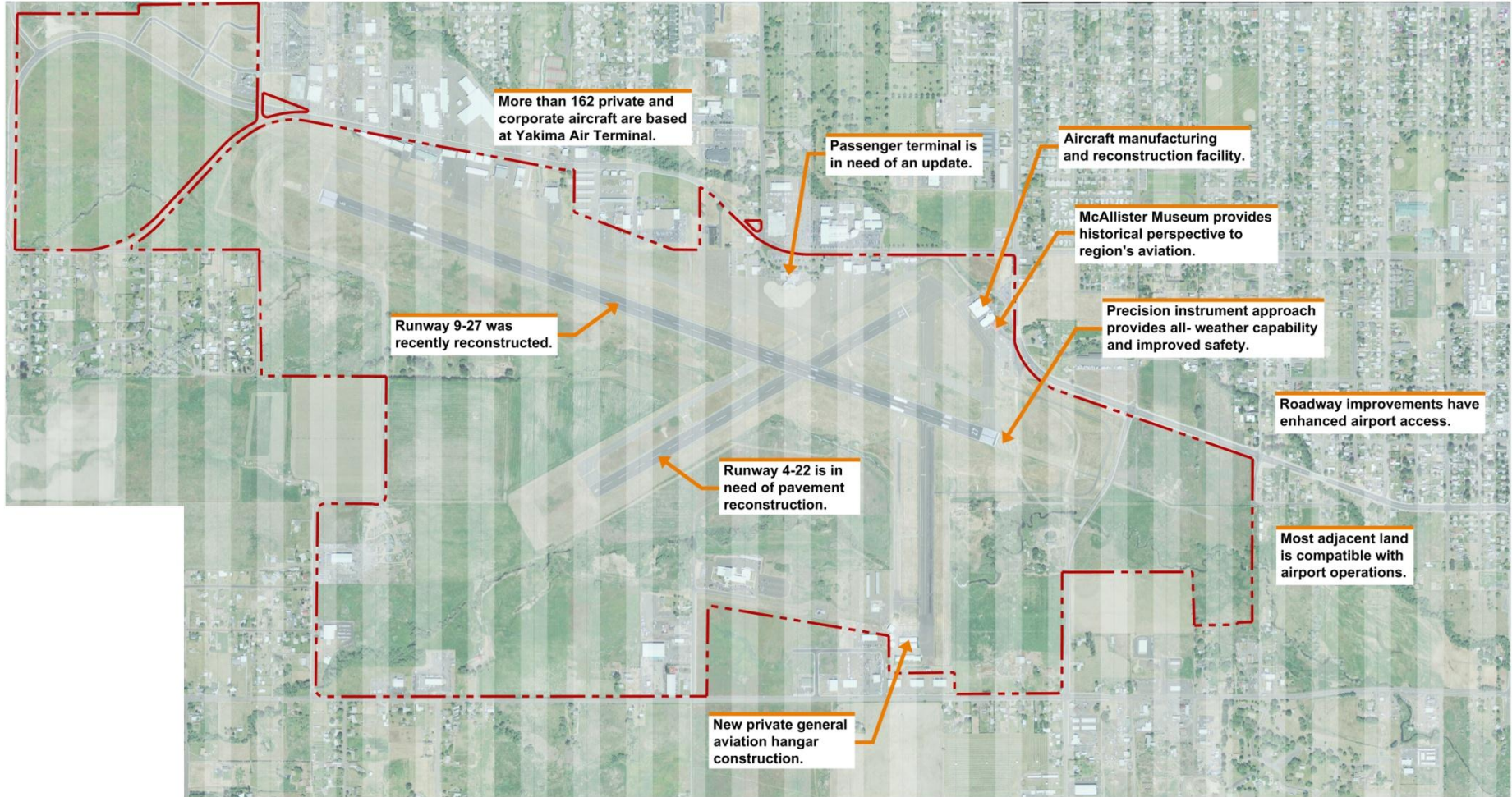
- Continue to improve the business environment.
- Add commercial services to destinations other than Sea-Tac.
- Create new airport income sources.
- Improve traveler accommodations including restaurants.
- Improve the general aviation (GA) environment.
- Add a grass runway for general aviation pilots.

Overall Assessment of YKM:

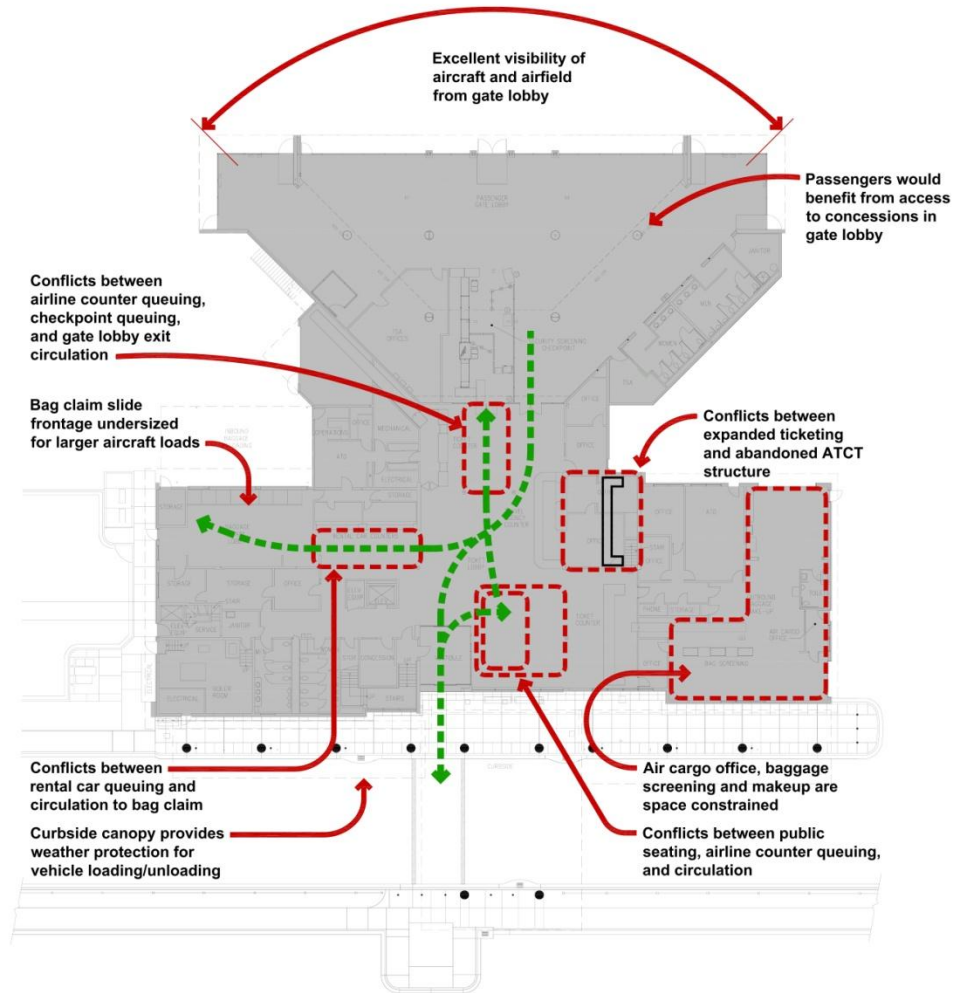
- Provides vital commercial service to the region.
- Easily accessible vehicle rentals.
- Excellent airport maintenance.
- Easy airline check-in process.
- Responsive airport management.



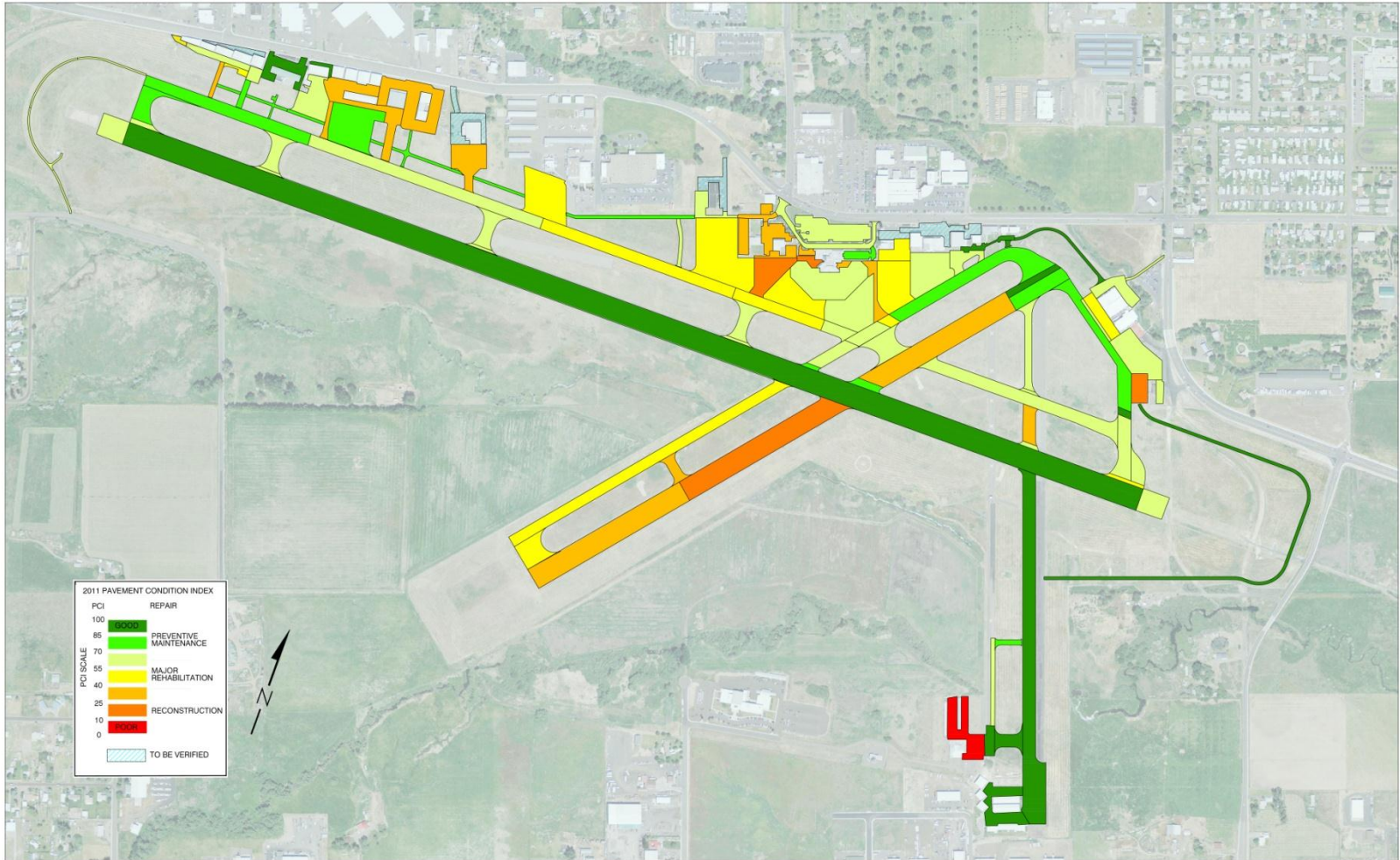
Existing Conditions



Terminal Facility Assessment



Pavement Conditions



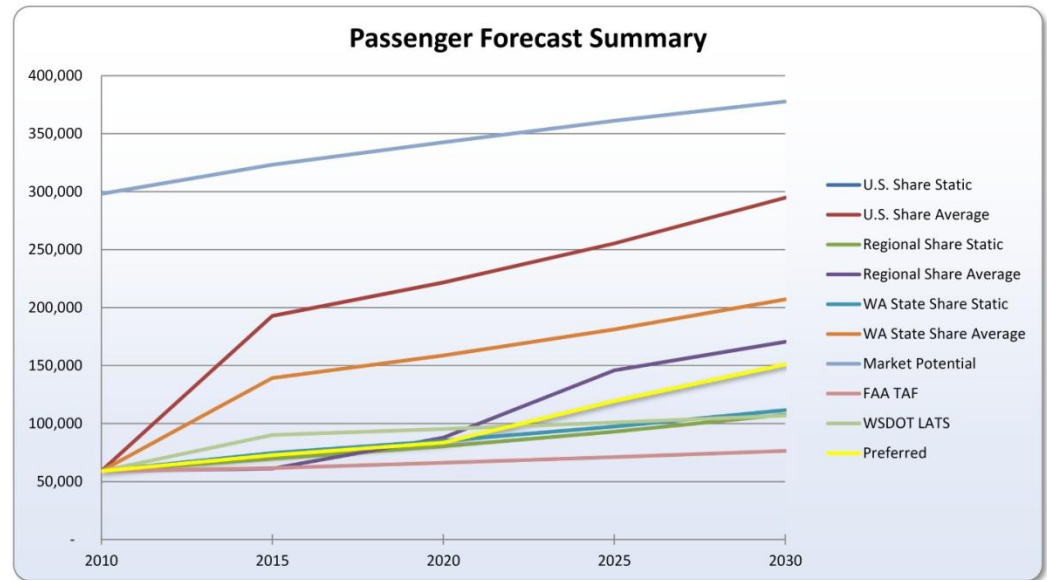
YAKIMA AIR TERMINAL / McALLISTER FIELD | Yakima, WA

Enplaned Passenger Projections

- More than 300,000 people in the YKM service area travel by air each year.
- Only 58,994 passengers use YKM.
- Forecast passenger levels will range from 75,000 to 378,000 by the year 2030.

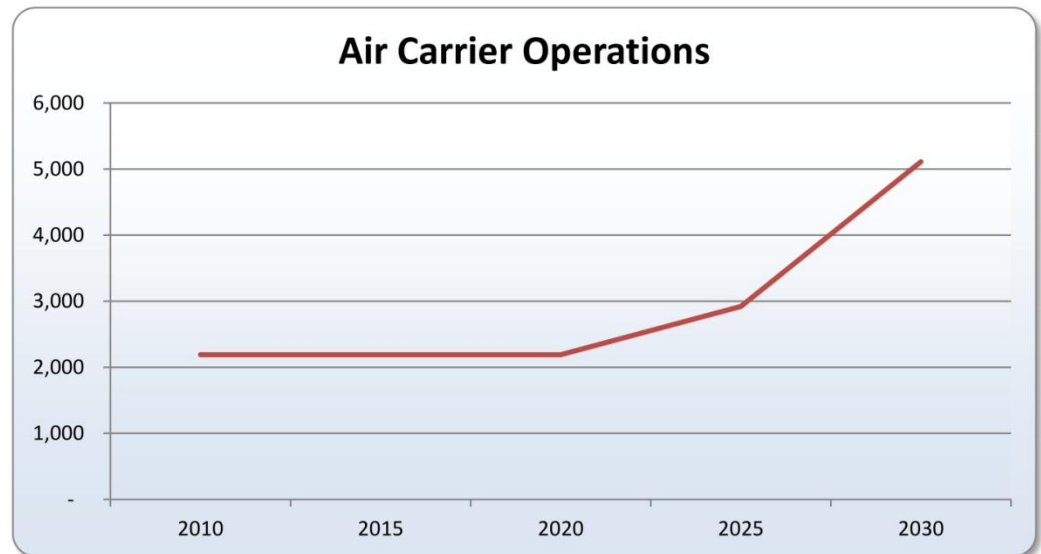
Preferred forecast:

- Moderate growth in the short-term as the Community attracts new service.
- Gradual reclaiming of more of the "potential market."
- By the mid term 2020, enplaned passengers will be near 100,000 per year.
- By 2030 more than 150,000 passengers will enplane at YKM.



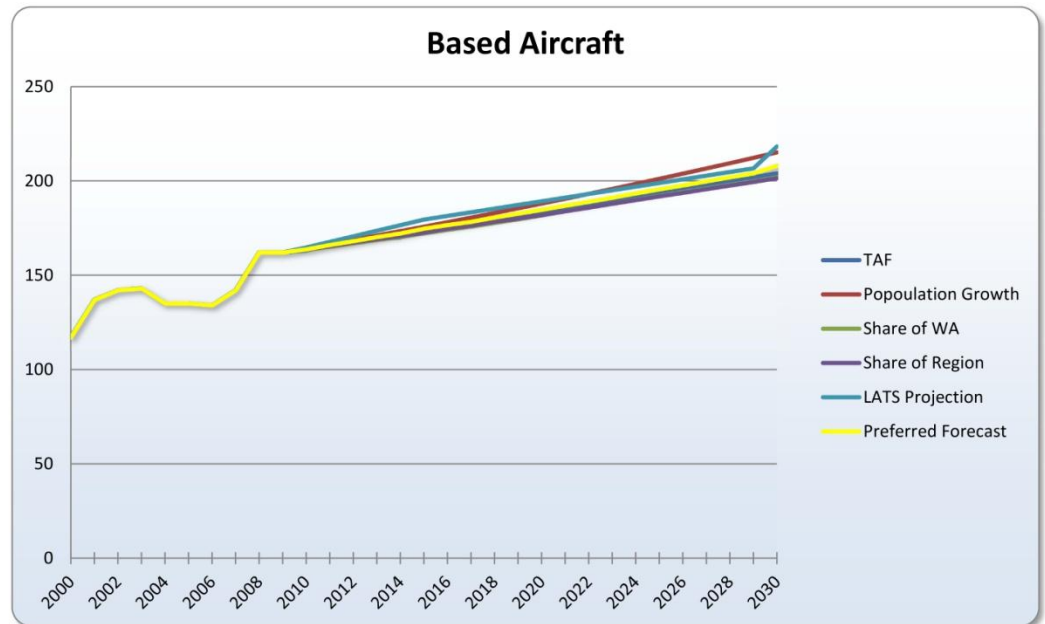
Air Carrier Operations

- Air carriers will use planes with fewer than 75 seats such as the Bombardier Q-400, currently used by Horizon.
- Airlines will add flights as passenger levels increase.
- Adding destinations and daily flights could increase operations at any time.



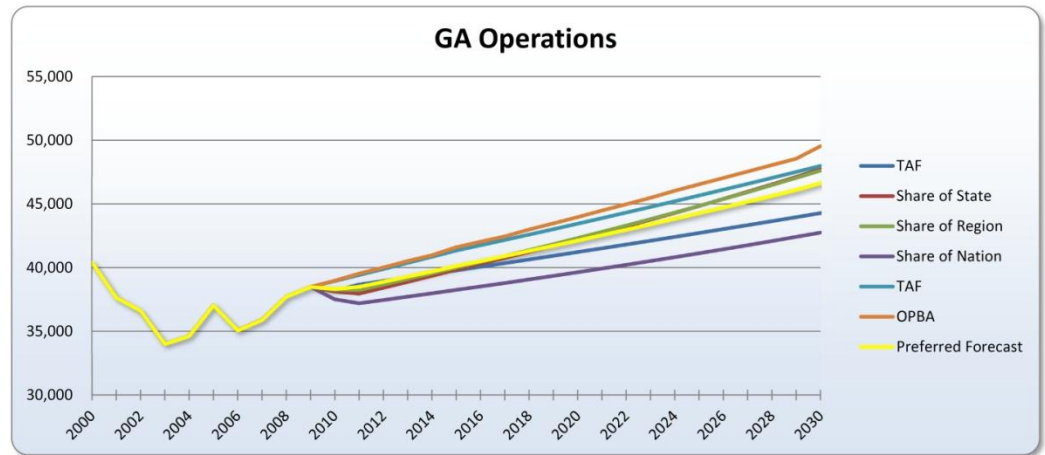
Based Aircraft

- YKM has a healthy general aviation community.
- Most based aircraft are small single and twin engine piston aircraft.
- All signs indicate continued growth from 162 based aircraft to more than 200 by the year 2030.
- YKM is attracting aircraft from the more crowded airports west of the Cascades.



Forecast of GA Operations

- General aviation operations at YKM dropped throughout the early 90's.
- Operations have been relatively stable since the year 2000.
- Moderate growth is expected through the year 2030.



Aircraft Commonly Using YKM Today



Lear Jets
Business Use
<500 / year



Boeing Jets
Test Flights | Training | Charter Service
200 / year



Small Twin Engine Piston
Business Use | Personal Transport | Training
11,600 / year



Cessna Citation
Business Use
1,000 / year



Bombardier Q-400
Horizon Airlines
2,200 / year



Small Single Engine Piston
Business Use | Personal Transport | Recreation | Training
43,500 / year



Regional Jets
Commercial Use
200 / year



Other Turbo Props
Air Cargo | Business Use
3,600 / year



Rotocraft
Business Use
950 / year

